

SUSTAINABILITY STATEMENT

KARIEGA

GAME RESERVE

Eastern Cape · South Africa

WWW.KARIEGA.CO.ZA

SUSTAINABILITY STATEMENT

Kariega Game Reserve are the proud custodians of a re-established ecosystem rich in biodiversity. The responsibility for the wise use of resources and for the protection and conservation of ecosystems and species lies with us all – individuals, businesses, non-profit organisations and government. We are accordingly dedicated to achieving good environmental practice and operating in a sustainable manner.

We believe that the well-being of our neighbouring, rural communities is as important as the protection of biodiversity and that sustainable ecotourism is dependent on achieving benefits for all parties - our guests, our local communities, our environment and wildlife.

We strive to be a united, conservation-minded community with the will to work together for the protection, conservation and benefit of our planet, people and wildlife.

To actualise this vision we have worked in partnership with the Kariega Foundation Trust to develop a sustainability framework that guides decision making and encourages regular self-assessment and progress in key areas that will ensure our own sustainability in eco-tourism, but also delivers on our duty of care towards the sustainable conservation of our planet for future generations to enjoy.



SUSTAINABILITY STATEMENT



PROTECTION OF
BIODIVERSITY



EQUITY, STAFF AND
LOCAL ECONOMY



COMMUNITY
AND CULTURE



HEALTH
AND SAFETY



WATER



WASTE



ENERGY



MATERIALS
AND PRODUCTS

PROTECTION OF BIODIVERSITY

We protect and conserve 11, 500 hectares of wilderness, including two richly biodiverse river valleys (The Kariega and Bushman's River).

WE WORK WITH TWO ENDANGERED SPECIES LISTS:

1. Internationally: The Red Data List under the International Union for Conservation of Nature (IUCN).
2. Locally: The Threatened or Protected Species List (TOPS) under the National Environment Management Biodiversity Act (NEMBA-Act 10 of 2004).

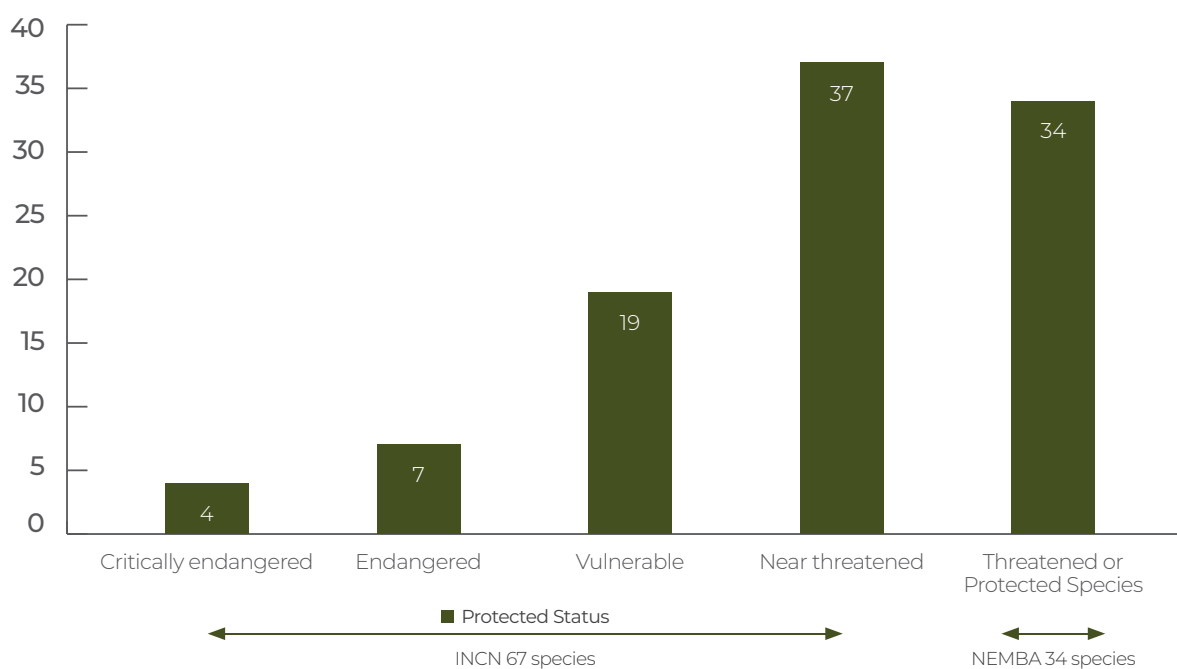
The total number of species currently listed on Kariega Game Reserve is 1250 of which 75 are under some form of protection, with 27 species listed under both the RED DATA LIST and TOPS, while a further 8 species are listed only on TOPS and 41 species listed only on the RED DATA LIST.

TOTAL SPECIES BREAKDOWN:

The table gives a breakdown of the total species richness, by life form groups, present and assessed to date on Kariaga Game Reserve and the number of species in each category with some level of protection under the IUCN and NEMBA, respectively.

SPECIAL GROUP	NUMBER OF RECORDED SPECIES	IUCN-RED LIST	NEMBA-TOPS
Mammals	109	20	16
Birds	334	23	8
Fish	57	7	0
Reptiles	64	21	2
Amphibians	15	0	0
Invertebrates	Not yet determined	2	0
Plants	671	14	8
Total	1250	57	34

TOTAL SPECIES BREAKDOWN:



CRITICALLY ENDANGERED SPECIES:

- Black Rhino
- White Backed Vulture
- Esturine Pipefish
- Hottentots Boegoe

ENDANGERED SPECIES:

- Mountain Reedbuck
- Martial Eagle
- Dusky Cob
- White Steenbras
- Albany Adder
- Inquieta Spiny-backed Spider
- Cape Dwarf Eelgrass

NOTE:

The white rhinoceros is currently listed as near threatened. However, they are currently the most targeted animal by poachers and at risk of quickly moving up the list to endangered.

As a result of a focused investment in the development of advanced technology surveillance systems and a professional, well trained and resourced Anti-Poaching Unit, we have had zero black or white rhino poached since 2012.

Our wildlife and habitat management plan is compliant with the laws that govern a Protected Area status, which we achieved in 2018.

We support many research projects that contribute to on-going improvements in conservation methods for key species including elephant, lion, rhino, cheetah, leopard and giraffe.

EQUITY, STAFF AND LOCAL ECONOMY

We promote employment equity and fairness through our recruitment policies and practices and consistent, constructive engagement with our employment equity committee and the trade unions that represent select staff.

We encourage staff development with pathways for promotion into senior management positions.

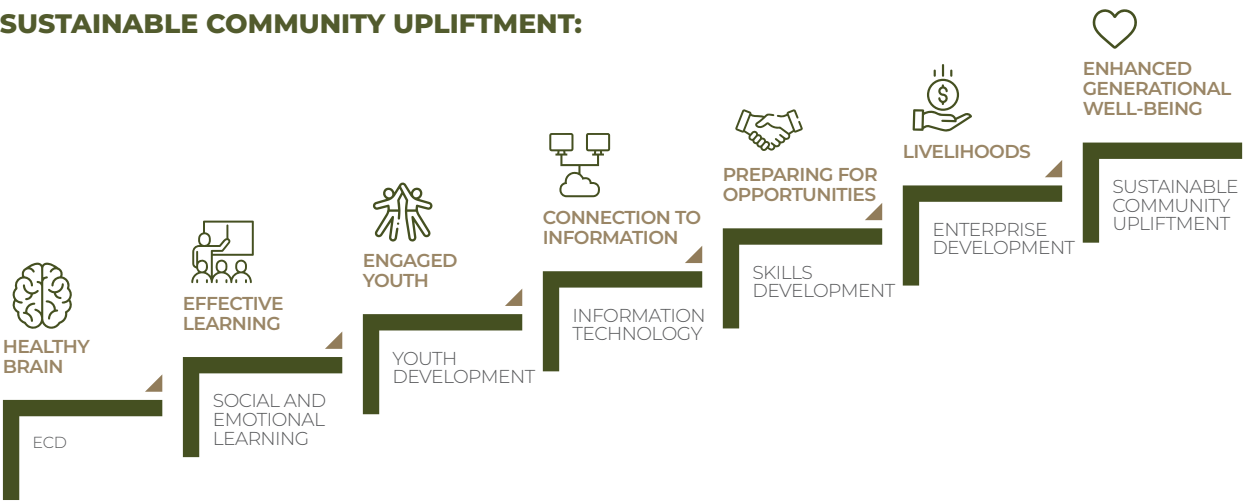
Our procurement policies prioritise local enterprises where ever possible.

COMMUNITY AND CULTURE

We believe that the sustainable protection of biodiverse landscapes can only be achieved when land use through eco-tourism generates additional and sustainable revenue to fund research-driven conservation practices with tangible benefits and opportunities flowing to the communities that live in and around the protected area. This results in communities joining conservation efforts with a common will to preserve the protected area forever.

A primary objective of the Kariega Foundation Trust is creating programmes and projects to sustainably and consistently uplift neighbouring communities.

SUSTAINABLE COMMUNITY UPLIFTMENT:



A Key focus area of this Theory of Change is the empowerment and capacitation of youth through Social and Emotional Learning, to harness skills and enterprise development opportunities for job creation.

OUR SKILLS DEVELOPMENT PROGRAMMES INCLUDE:



**ANTI-POACHING
RANGER
TRAINING**



**FGASA
SCHOOL FOR
FIELD GUIDE
TRAINING**



**ALIEN PLANT
CONTROL
PRACTITIONER
TRAINING**



**SEL YOUTH
DEVELOPMENT
TRAINING (SACE
ACCREDITED)**



**TERTIARY
EDUCATION
BURSARIES**

HEALTH AND SAFETY

The well-being and safety of our staff and guests is a top priority.

Kariega Game Reserve has undertaken an in-depth health and safety audit facilitated by third party consultants. The reserve is fully compliant with all legal health and safety requirements and has actioned all recommendation resulting from the audit. This is not a static area of business and is an on-going priority for management.

WATER

Water is a valuable resource and every effort is made to minimise waste and prioritise being water wise.

Guests are educated and requested to take short showers; reuse towels and can opt out of daily linen changes.

Water wise, endemic gardens have been planted and swimming pools are maintained and cleaned in a way that reduces water wastage.

Dual-flow toilets have been installed and low-flow shower heads.

Laundry operations have been streamlined to minimise water wastage.



WASTE

EVERY EFFORT IS MADE TO MINIMISE WASTE.

- Single-use plastics have been replaced with bulk dispensers
- Single-use plastic bottles are not offered. Guests are given glass water bottles on arrival which can be refilled at various water stations
- Single-use plastic straws are not offered
- Single-use plastic stirrers are not offered
- All lodges have reusable tableware and crockery
- All lodges use environment friendly cleaning products
- All lodges separate wet and dry waste with management systems that comply with local waste management protocols
- A property wide recycling programme is in place

ENERGY

EVERY EFFORT IS MADE TO BE ENERGY EFFICIENT.

- Two lodges are in the process of being converted to 100% off the grid, solar powered facilities
- LED lighting is used where possible
- Vegetarian and vegan menu options are offered
- Where ever possible food is locally sourced – within 50km of property
- 80% of automated gates and surveillance cameras are solar powered

MATERIAL AND PRODUCTS

OUR PROCUREMENT POLICIES AND PROCEDURES ENCOURAGE:

- Supporting local suppliers and small businesses
- Fair-trade suppliers
- Suppliers that do not engage in any form of human exploitation or abuse
- Goods made from recycled materials that can be recycled locally
- Delivered in minimal or sustainable packaging
- Personal care products free of microbeads

KARIEGA

GAME RESERVE

Eastern Cape · South Africa

CONTACT DETAILS

If you have any queries please feel free to contact us. Office hours are 8am-5pm weekdays (SAST).

TOUR OPERATOR BOOKINGS

e: resl@kariega.co.za

t: +27 (0)46 636 7904

MARKETING & HEAD OFFICE ENQUIRIES:

e: mark@kariega.co.za

t: +27 (0)41 581 2606

PRIVATE BOOKINGS

e: reservations@kariega.co.za

t: +27 (0)46 636 7904



**KARIEGA
FOUNDATION**

www.kariegafoundation.com

In partnership with

KARIEGA

www.kariega.co.za